

Horace Mann Elementary School

Design Development Phase

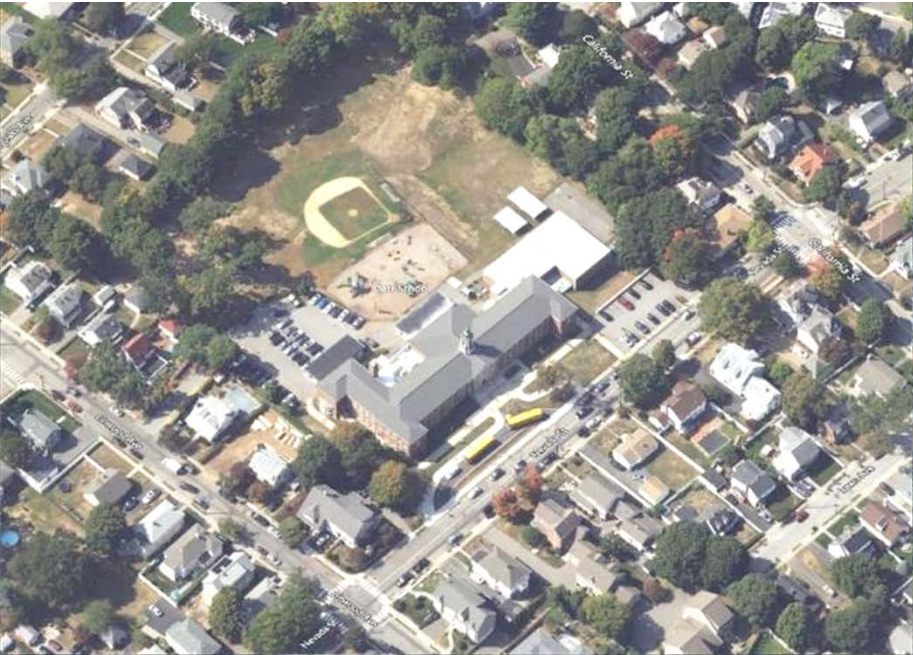
DRC / SBC Meeting

August 14, 2024



Raymond
Design Associates





Agenda

- Schedule
- Programming
Floor Plan Updates
- Design Updates
New Entries
Media Center



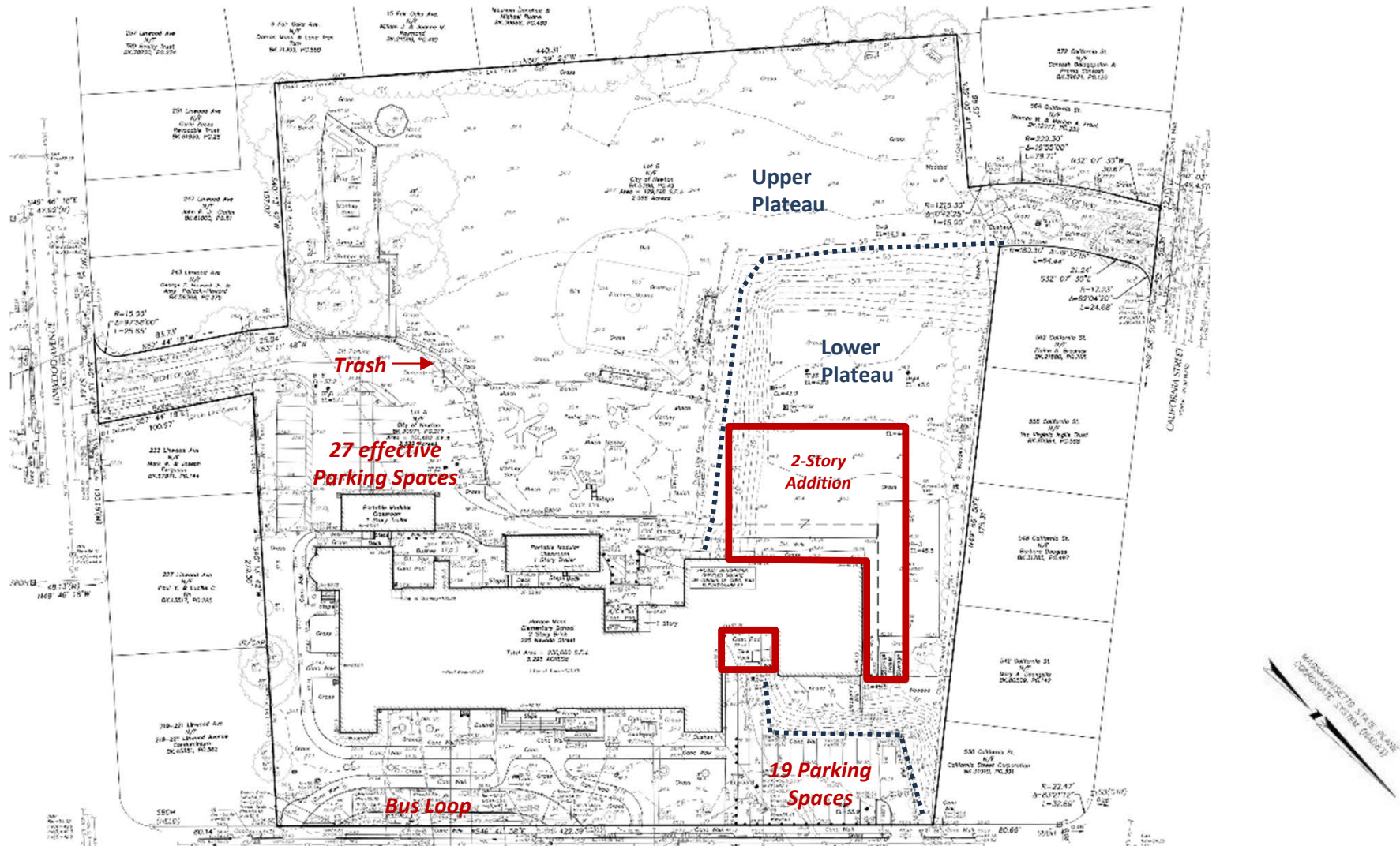
Horace Mann Elementary School

Proposed Horrace Mann Meeting Schedule

[illegible]

N V 5

Existing Conditions



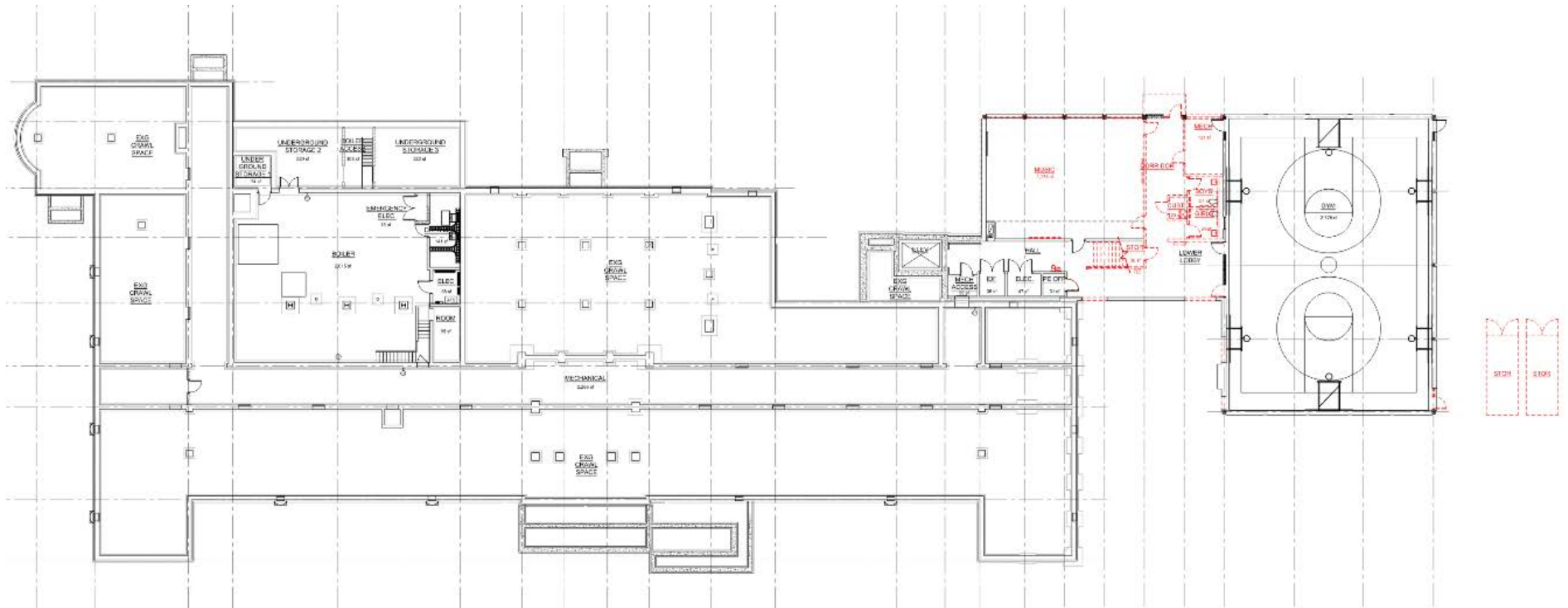
Site Improvements



- Emergency Access
- On-Site Parking (no net loss)
- Exterior Lighting
- New PIP Playground
- Hardsurface Play
- Relocated BB Field
- Retained Sledding Hill
- Accessibility
- Trees & Vegetation

Programming

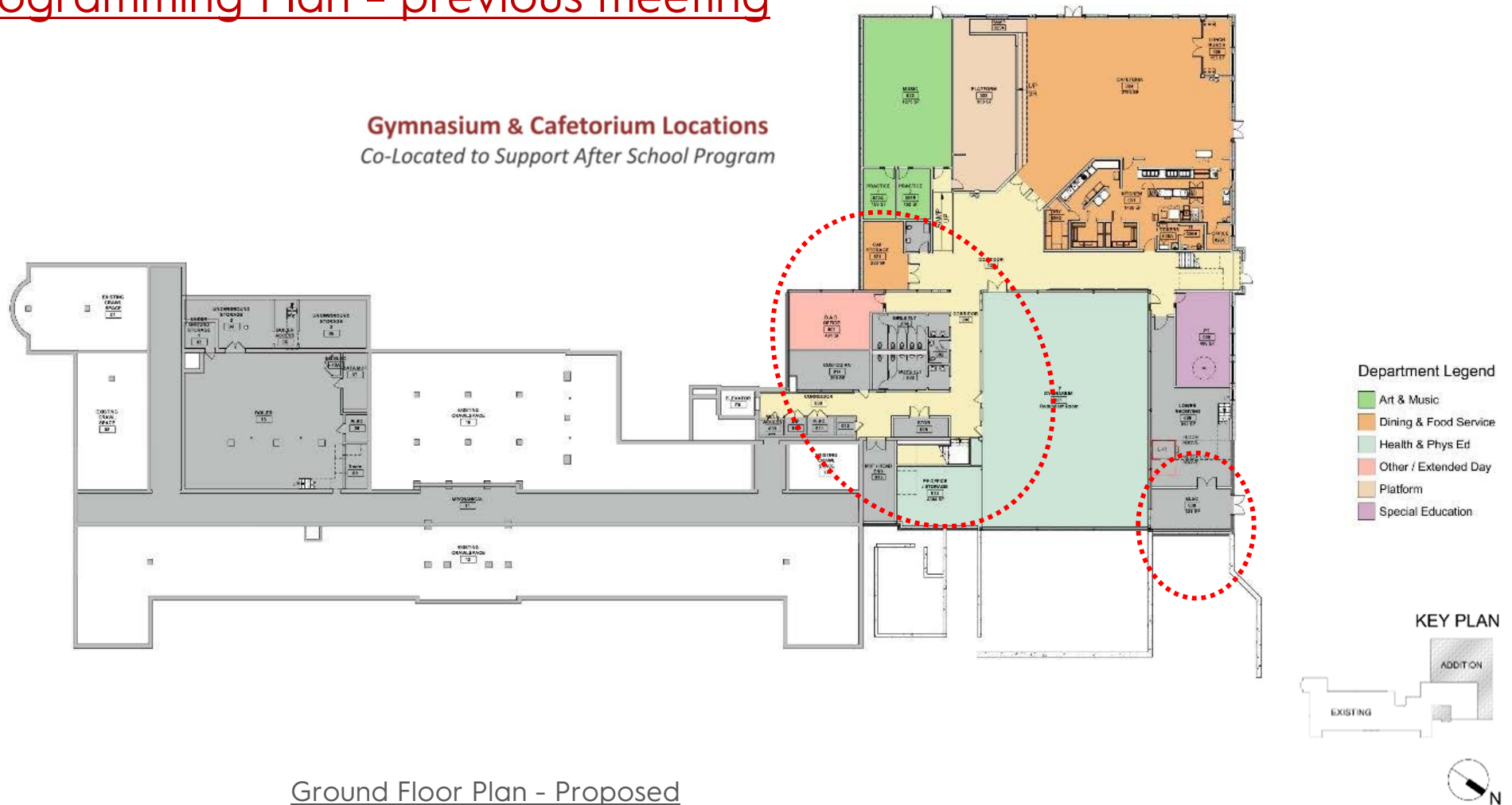
Existing Conditions / Demolition



Ground Floor Plan

Ground Floor Programming Plan - previous meeting

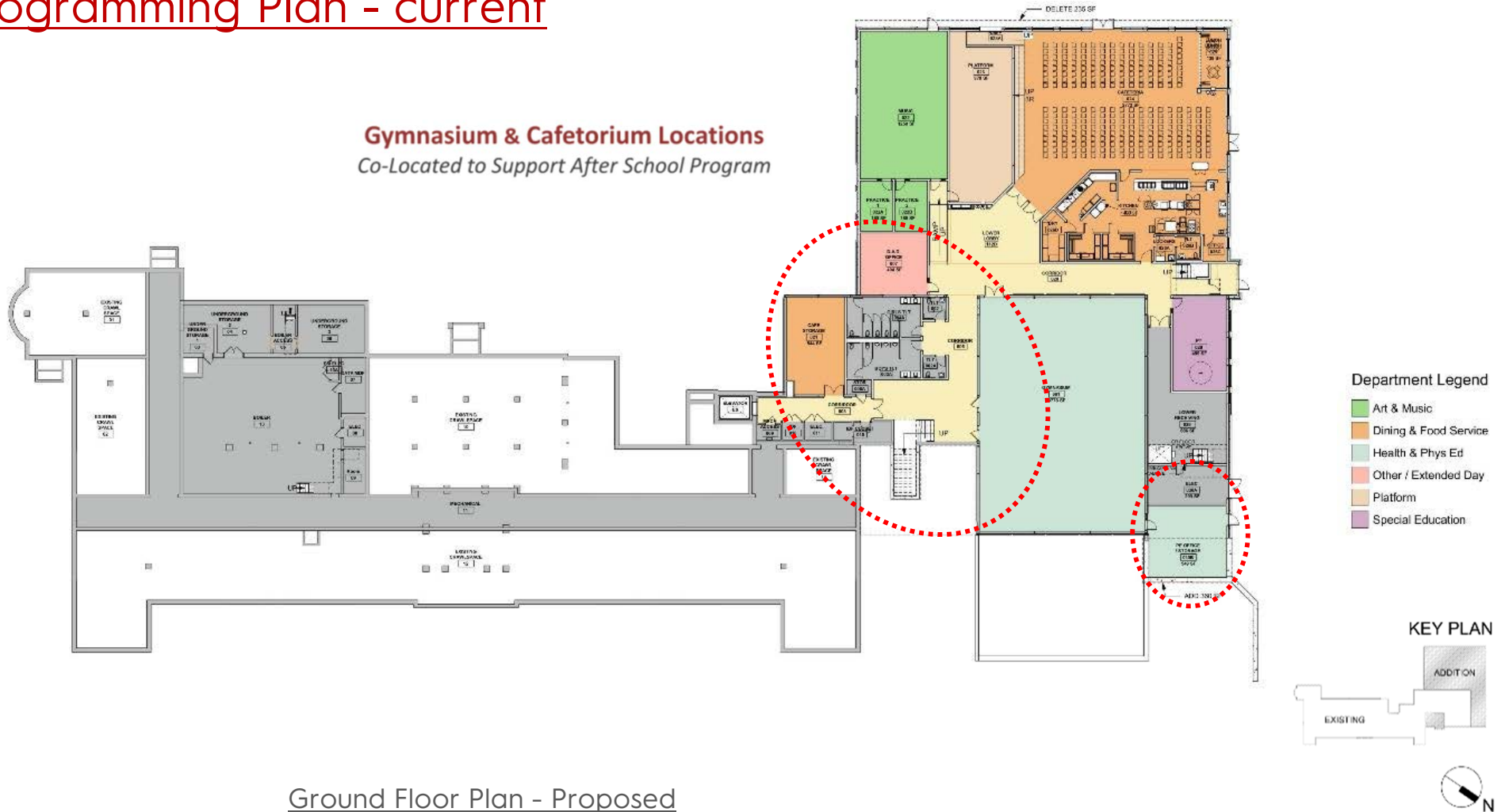
Gymnasium & Cafetorium Locations *Co-Located to Support After School Program*



Ground Floor Plan - Proposed

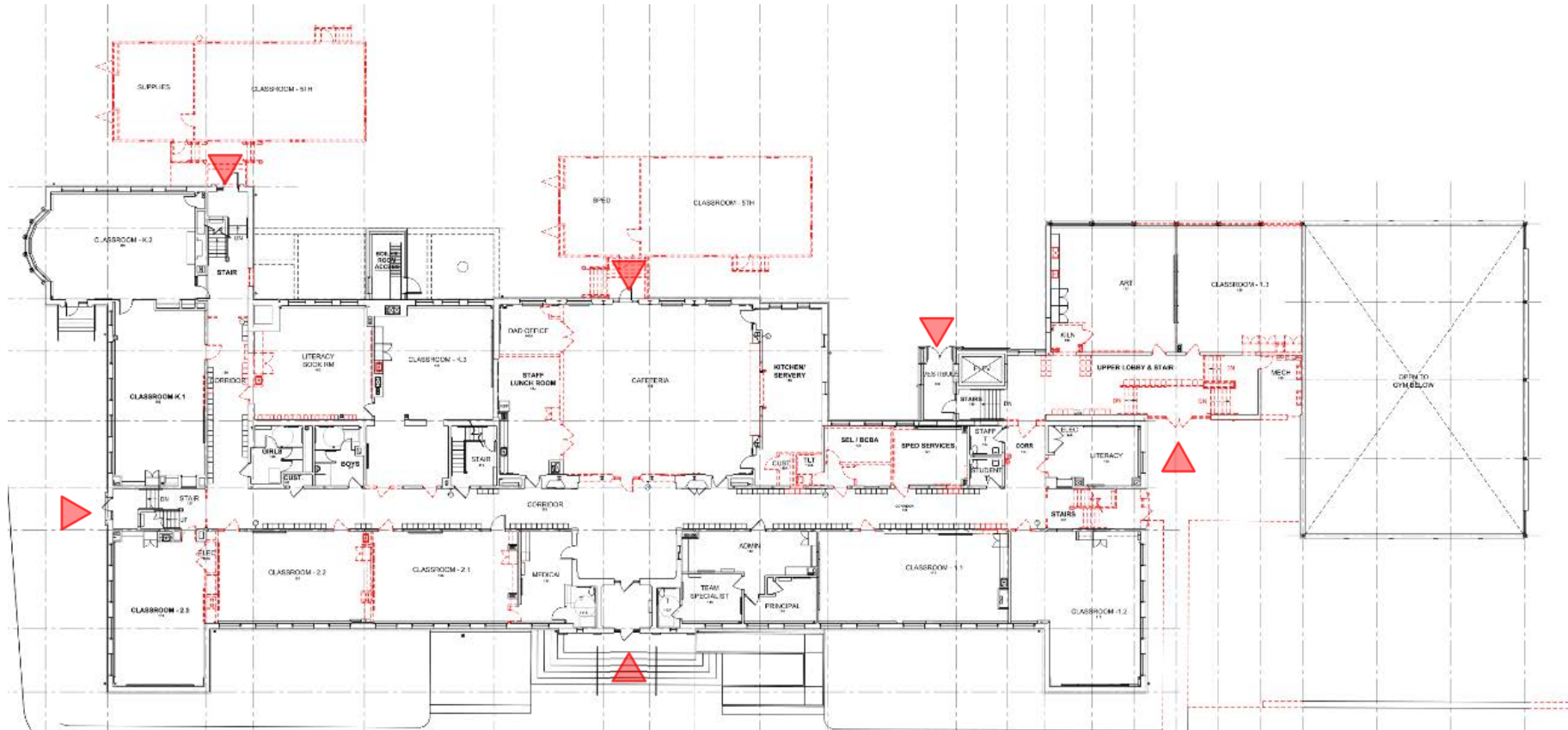
Ground Floor Programming Plan - current

Gymnasium & Cafetorium Locations
Co-Located to Support After School Program



Ground Floor Plan - Proposed

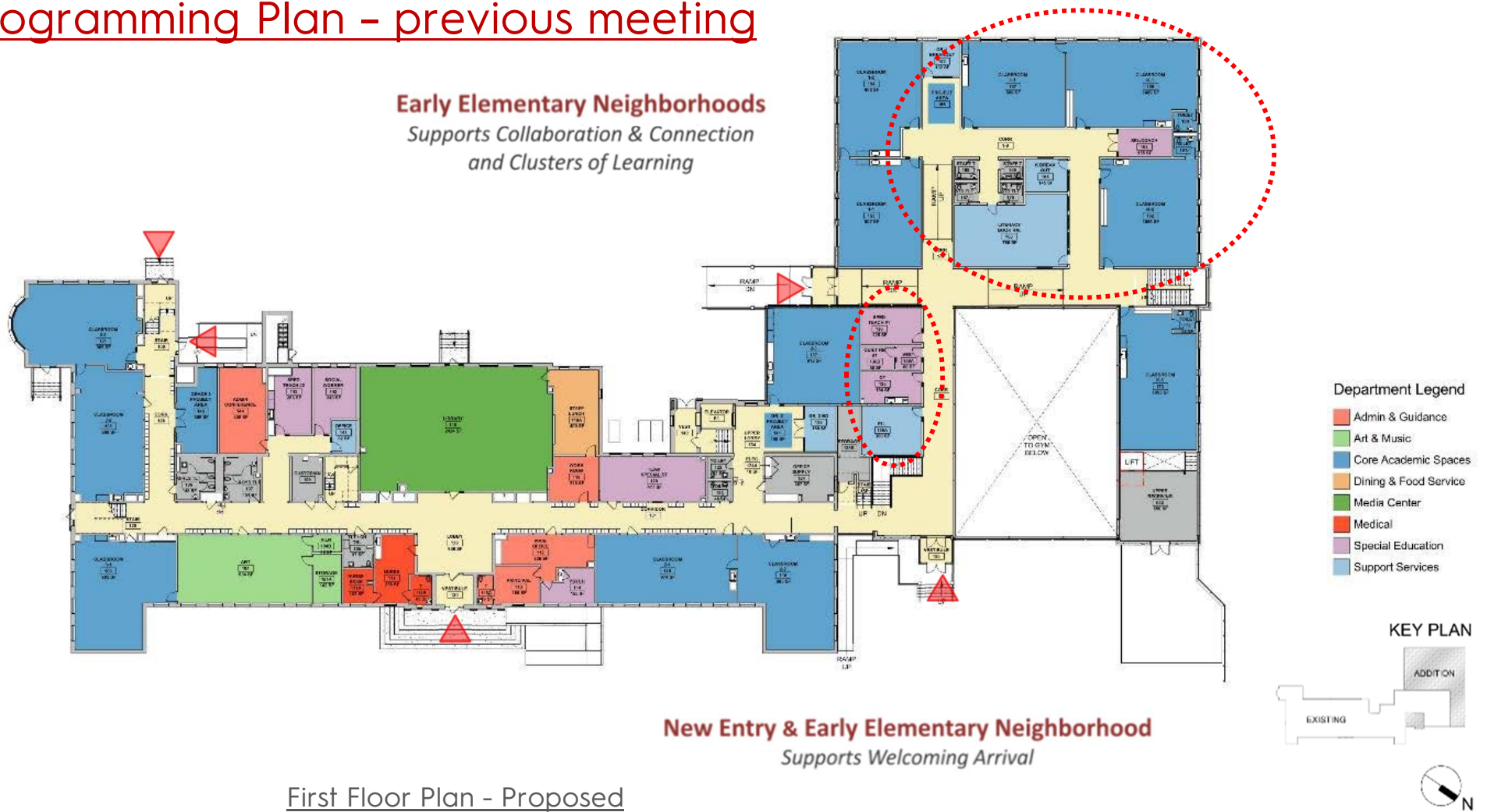
Existing Conditions / Demolition



First Floor Plan

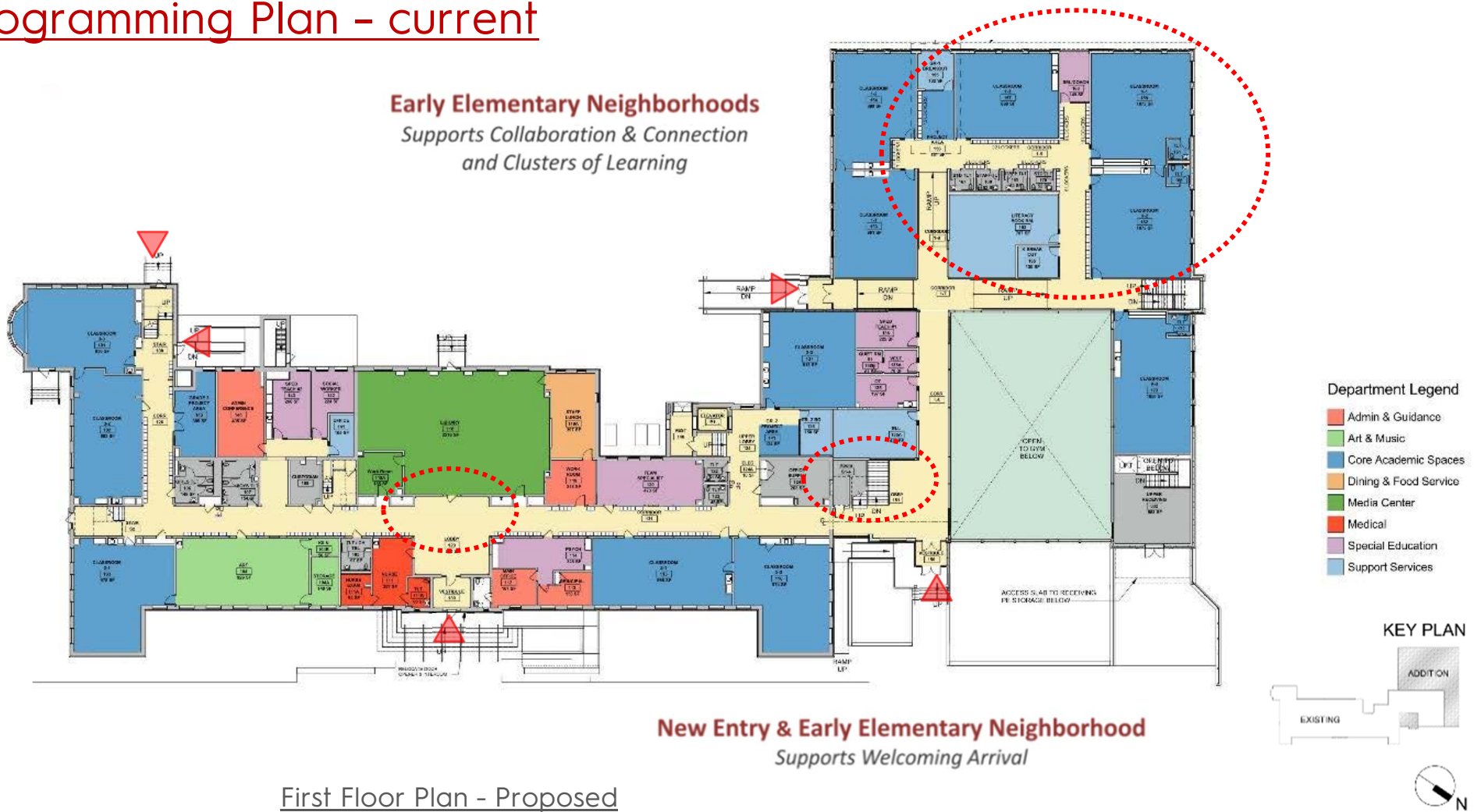
First Floor Programming Plan - previous meeting

Early Elementary Neighborhoods
*Supports Collaboration & Connection
and Clusters of Learning*



First Floor Plan - Proposed

First Floor Programming Plan - current



Lobby – looking towards Media Center

*Existing
Corridor*

*Doors to
Media Center*

*Existing
Lobby*

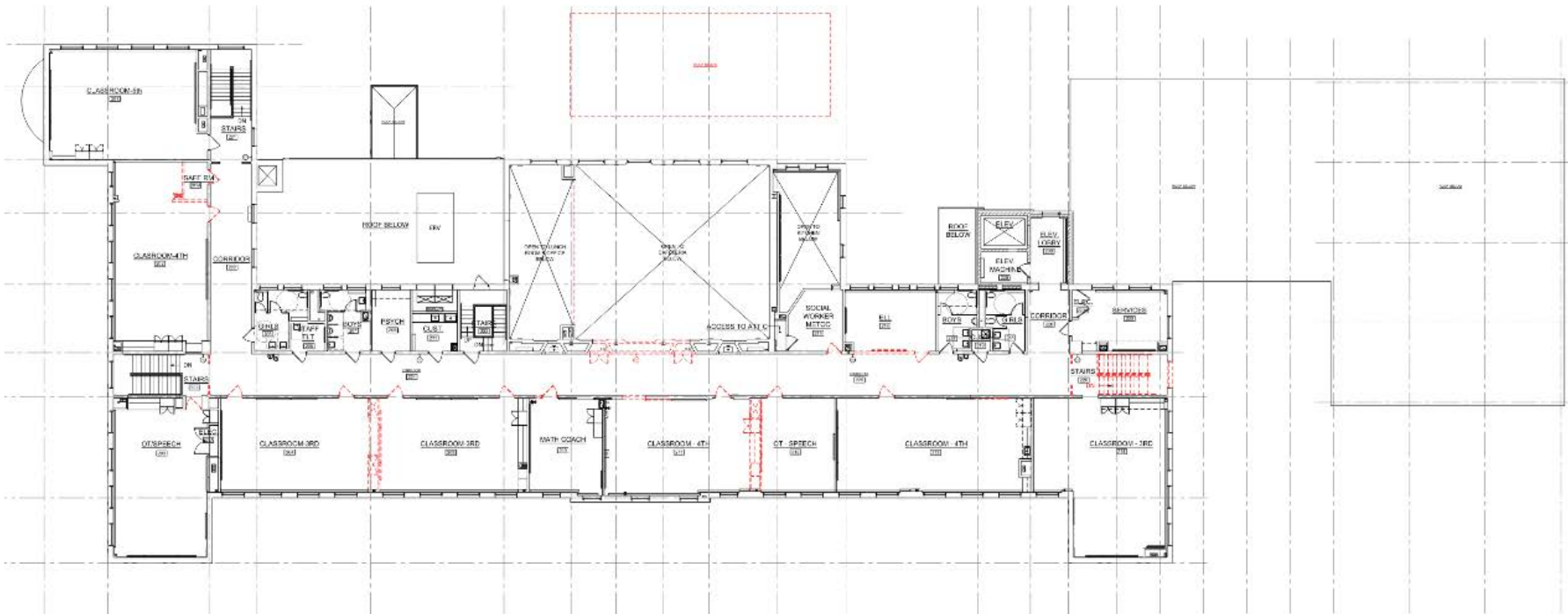


*Existing
Corridor*

Media Center – looking towards Lobby

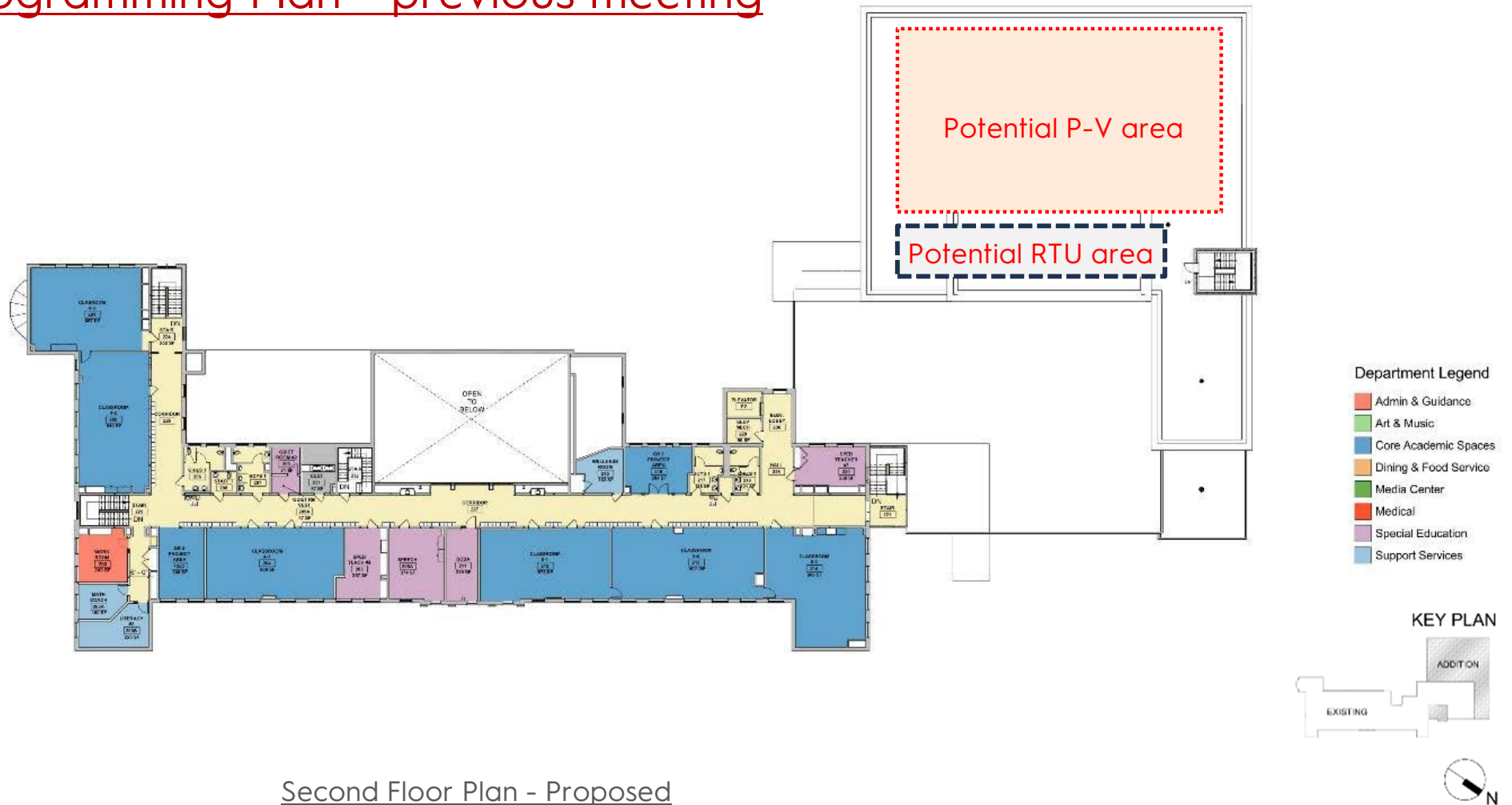


Existing Conditions / Demolition

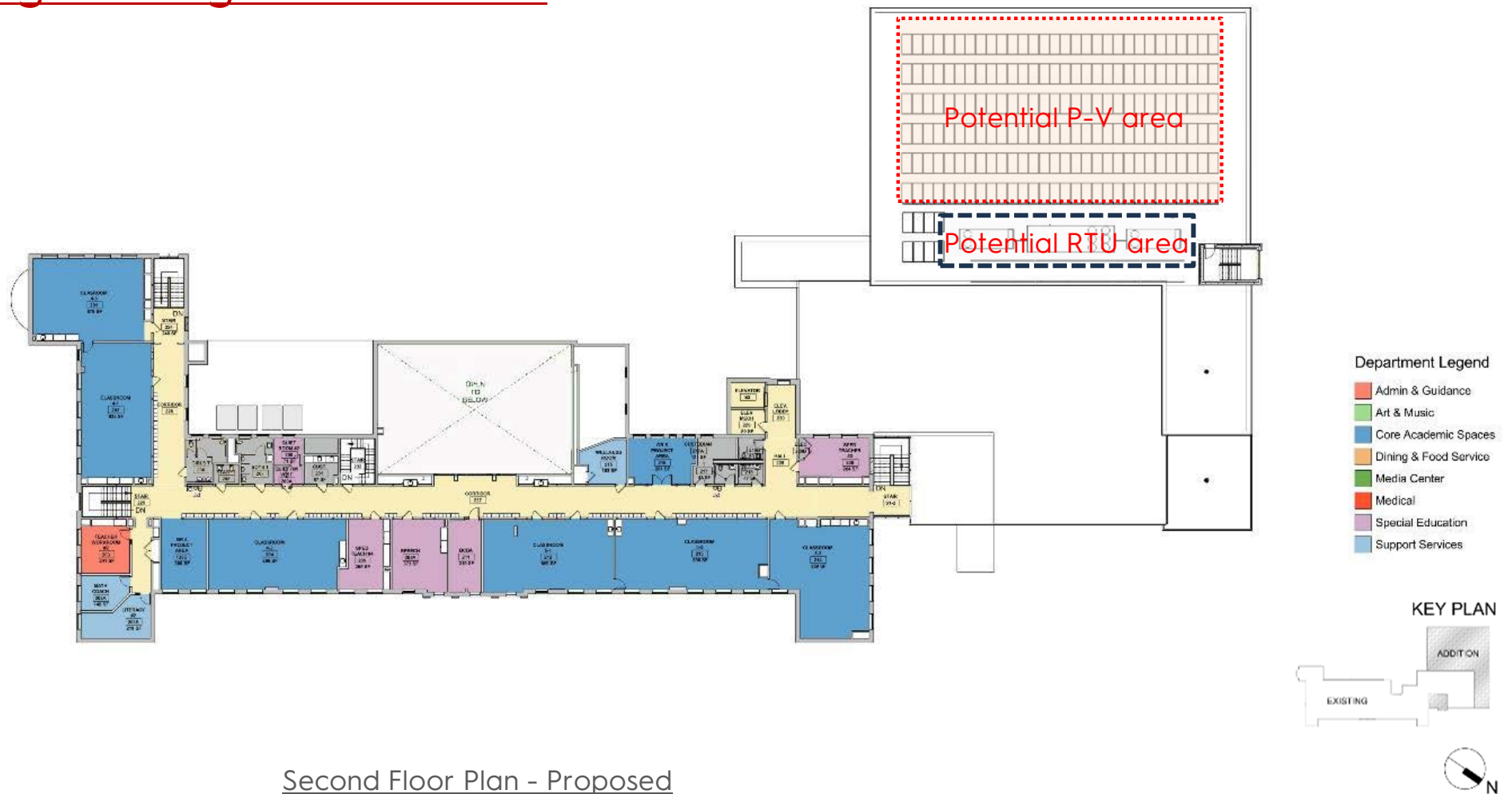


Second Floor Plan

Second Floor Programming Plan - previous meeting



Second Floor Programming Plan - current



Front Accessible Entrance to Stair Addition – previous meeting



Front Accessible Entrance to Stair Addition – previous meeting



Front Accessible Entrance to Stair Addition – current



Rear Entrance to Addition – previous meeting



Rear Entrance to Addition – current



Rear Entry Ramp – previous meeting



Rear Entry Ramp - current



Existing



225 Nevada St

Aerial View – previous meeting



Aerial View – current



Questions & Comments

