



HORACE MANN ELEMENTARY SCHOOL

Newton, MA



Monthly Project Update Report

APRIL 2026

FS/SD	DD	CD	Bidding	Construction	Closeout
-------	----	----	---------	---------------------	----------

EXECUTIVE SUMMARY

Work this month has focused on substantially completing tasks making the North Addition weather tight. Additional focus has been on the fit-up of MEPFP systems and equipment throughout all available areas of the Project and finalizing GWB finishing at the South Addition to continue paint and finishes.

North Addition & Related Sitework – Exterior light gauge metal framing, sheathing and AVB is substantially complete. Installation of curtainwall framing has commenced at the west elevation at the roof level. Single ply membrane roof installation at the North Addition is substantially complete. The generator pad has been poured and rough grading continues at the generator yard.

South Addition - Single ply membrane roof terminations are complete at pipe penetrations and mechanical curb flashings. GWB installation, taping and sanding is substantially complete on the 1st Floor and continues on the Ground Floor. Porcelain ceramic tile installation and painting are well underway throughout the first floor. Fit-out of the main electrical room is nearing completion. The site retaining wall has been poured.

Existing Building - Painting is well underway at the 1st floor. Millwork and casework installation has begun at the Library and Staff Lunchroom. Resilient sheet flooring installation is nearing completion at the 2nd floor. Ceiling grid is substantially complete and ACT panel installation continues at all available areas. Installation of sidewalks and plazas has begun south of the existing building.

General Sitework – General stockpiling and management of soil materials continues. Asphalt has been removed and the future parking area has been proof rolled and rough graded. Grading and compaction continues for the installation of plazas and sidewalks.

Administrative Activities

04/07/26	Weekly Construction Meeting
04/14/26	Weekly Construction Meeting
04/21/26	Weekly Construction Meeting
04/28/26	Weekly Construction Meeting

Construction Activities:

The GC (M O'Connor) continues to manage and coordinate all onsite construction activities.

- Installed exterior gypsum sheathing and AVB at the exterior walls of the North Addition.
- Commenced curtainwall framing installation at the North Addition.
- Began installing interior millwork.
- Cut and removed brick at new window openings in the gym.
- Grout the North wall of the gym.
- Install ceramic tile at ground floor toilet core.
- Completed painting the 1st Floor South Addition, commence painting at the Ground Floor.
- Finalized and insulated all rooftop mechanical piping. Commenced rooftop mechanical ductwork.
- Continued earthwork operations at the North and South areas of the site.
- Continued ceramic tile installation at all available areas.
- Commenced epoxy floor installation.
- Commenced resilient flooring installation.
- Completed membrane roofing above the ground floor vault at the new accessible entrance.
- Installed cooler/freezer in the kitchen area.
- Poured the generator pad.
- Commenced forming and pouring site sidewalks and plazas

TASKS PLANNED FOR NEXT MONTH

Administrative Activities

05/05/26	Weekly construction meeting
05/12/26	Weekly construction meeting
05/19/26	Weekly construction meeting
05/26/26	Weekly construction meeting

Construction Activities:

- Commence and complete masonry at the North Addition
- Provide site as-built information to enable main electrical service routing modifications
- Continue and complete curtainwall/ storefront framing and glazing at the North Addition
- Install Stair 7 in the North Addition
- Commence and complete all interior light gauge metal framing and GWB at the North Addition
- Install HM frames in the North Addition
- Prime paint all available areas in the North Addition.
- Install ERV 1
- Complete all interior MEP FP work in the North Addition
- Continue installing site sidewalks and plazas. Complete sitework for the basketball court.
- Fine-grade the South parking area
- Finalize installation of porcelain ceramic tile at the ground and 1st floors of the South Addition
- Install quarry tile floor in the kitchen
- Continue kitchen equipment installation
- Complete new hydrant water tie-in south of the existing building
- Make final sewer and drainage connections in Nevada Street
- Complete ramp at accessible entrance
- Commence resilient flooring in the South Addition
- Continue ATC grid and panels at all available areas
- Complete epoxy flooring
- Commence door and hardware installation
- Continue millwork and casework installation at all available areas
- Complete Installation of the roll up door in the Kitchen
- Install the material lift in the Lower Receiving Area
- Install smoke detectors and start-up FA system

PROJECT MILESTONE SCHEDULE

- | | |
|------------|----------------------------|
| ▪ 04/18/25 | Phase 1 Start |
| ▪ 07/31/25 | Phase 2 Start |
| ▪ 11/01/25 | Complete Structural Steel |
| ▪ 11/28/25 | Roof Dry In |
| ▪ 06/02/26 | Existing Building Finishes |
| ▪ 05/11/26 | Generator Install |
| ▪ 05/28/26 | Connector Finishes |
| ▪ 07/15/26 | Main Addition Finishes |
| ▪ 07/31/26 | Substantial Completion |

CONSTRUCTION PHOTOS



Commenced Installing Roll-Up Door at the Kitchen



Completing Sheet Resilient Flooring at the 2nd Floor of the Existing Building



Installing FA Devices on the 1st Floor of the South Addition



Installing Millwork in the Library



Plaza South of the Existing Building



Prep for Basketball Court Fence Posts

INTERNAL HORACE MANN 4/6/26
Substantial Completion 7/28/26

ID	Task Name	Duration	Start	Finish	% Complete	Free Slack	Predecessors	Successors	2026																																
									29	5	12	19	26	2	9	16	23	2	9	16	23	30	6	13	20	27	4	11	18	25	1	8	15	22	29	6	13	20	27	3	10
1	HORACE MANN	361 days?	4/4/25	9/11/26	60%	0 days?			[Gantt bar from 4/4/25 to 9/11/26]																																
2	MILESTONES	332 days	4/4/25	7/31/26	0%	29 days			[Gantt bar from 4/4/25 to 7/31/26]																																
3	NOTICE TO PROCEED	1 day	4/4/25	4/4/25	0%	360 days		63FS+9 days,64FS+9 days,65	[Gantt bar from 4/4/25 to 4/4/25]																																
4	PHASE 1 START	1 day	4/18/25	4/18/25	0%	350 days			[Gantt bar from 4/18/25 to 4/18/25]																																
5	SCHOOL OUT, NOISE OKAY	1 day	6/30/25	6/30/25	0%	301 days			[Gantt bar from 6/30/25 to 6/30/25]																																
6	PHASE 2 START	1 day	7/31/25	7/31/25	0%	279 days			[Gantt bar from 7/31/25 to 7/31/25]																																
7	RENOVATION ROUGH INSPECTIONS	1 day	1/2/26	1/2/26	0%	174 days			[Gantt bar from 1/2/26 to 1/2/26]																																
8	NORTH ADDITION ROUGH INSPECTIONS	1 day	5/11/26	5/11/26	0%	85 days	278FF		[Gantt bar from 5/11/26 to 5/11/26]																																
9	START MAIN ADDITION STRUCTURAL STEEL	1 day	9/12/25	9/12/25	0%	249 days	96SS		[Gantt bar from 9/12/25 to 9/12/25]																																
10	MAIN ADDITION STRUCTURAL STEEL COMPLETE	1 day	9/29/25	9/29/25	0%	238 days	293FF		[Gantt bar from 9/29/25 to 9/29/25]																																
11	MAIN ADDITION CONCRETE DECK COMPLE	1 day	10/6/25	10/6/25	0%	233 days	300FF		[Gantt bar from 10/6/25 to 10/6/25]																																
12	MAIN ADDITION ROOF DRY IN	1 day	1/6/26	1/6/26	0%	172 days	336FF		[Gantt bar from 1/6/26 to 1/6/26]																																
13	MAIN ADDITION ROUGH INSPECTIONS	1 day	1/22/26	1/22/26	0%	161 days	354		[Gantt bar from 1/22/26 to 1/22/26]																																
14	PHASE 1 PAVINGCOMPLETE	1 day	5/22/26	5/22/26	0%	76 days	134FF		[Gantt bar from 5/22/26 to 5/22/26]																																
15	PERMANENT POWER	1 day	4/24/26	4/24/26	0%	96 days	427FF		[Gantt bar from 4/24/26 to 4/24/26]																																
16	FINAL INSPECTION	1 day	7/27/26	7/27/26	0%	33 days	438FF		[Gantt bar from 7/27/26 to 7/27/26]																																
17	COMMISIONING START	1 day	7/17/26	7/17/26	0%	39 days	435SS		[Gantt bar from 7/17/26 to 7/17/26]																																
18	COMMISSIONING, TRAINING START	1 day	7/28/26	7/28/26	0%	32 days			[Gantt bar from 7/28/26 to 7/28/26]																																
19	CONTRACT SUBSTANTIAL COMPLETION	1 day	7/31/26	7/31/26	0%	29 days			[Gantt bar from 7/31/26 to 7/31/26]																																
20	CURRENT SUBSTANTIAL COMPLETION	1 day	7/28/26	7/28/26	0%	32 days	439FF		[Gantt bar from 7/28/26 to 7/28/26]																																
21	SUBMITTALS	100 days	4/7/25	8/27/25	100%	0 days			[Gantt bar from 4/7/25 to 8/27/25]																																
71	#26 Generator and Switchboard Submittal Delay	1 day	8/13/25	8/13/25	0%	270 days			[Gantt bar from 8/13/25 to 8/13/25]																																
72	Original Submittal	0.13 days	8/13/25	8/13/25	0%	0 days		73SS	[Gantt bar from 8/13/25 to 8/13/25]																																
73	Owner Requests Kohler 8/13/25	1 day	8/13/25	8/13/25	0%	270 days	72SS	121,122FS+25 days	[Gantt bar from 8/13/25 to 8/13/25]																																
74	CONSTRUCTION PHASE 1	105 days	4/21/25	9/18/25	100%	0 days			[Gantt bar from 4/21/25 to 9/18/25]																																
98	CONSTRUCTION PHASE 2	361 days?	4/4/25	9/11/26	46%	0 days?			[Gantt bar from 4/4/25 to 9/11/26]																																
99	END OF SCHOOL FACILITY USE	1 day	7/30/25	7/30/25	0%	280 days		101,102,104FS+1 day,164,1	[Gantt bar from 7/30/25 to 7/30/25]																																
100	MOBILIZATION	5 days	7/31/25	8/6/25	100%	0 days			[Gantt bar from 7/31/25 to 8/6/25]																																
103	SITE WORK 2025	212 days	8/1/25	6/5/26	66%	67 days			[Gantt bar from 8/1/25 to 6/5/26]																																
104	SAFE OFF SITE	3 days	8/1/25	8/5/25	100%	0 days	99FS+1 day	105,259	[Gantt bar from 8/1/25 to 8/5/25]																																
105	SITE DEMO	10 days	8/6/25	8/19/25	100%	0 days	104	106	[Gantt bar from 8/6/25 to 8/19/25]																																
106	ROUGH GRADING	5 days	8/20/25	8/26/25	100%	0 days	102,105	109,110,114,115FS+147 da	[Gantt bar from 8/20/25 to 8/26/25]																																
107	UTILITIES	167 days	8/27/25	4/28/26	95%	84 days			[Gantt bar from 8/27/25 to 4/28/26]																																
108	SOUTH	38 days	3/2/26	4/22/26	65%	88 days	62		[Gantt bar from 3/2/26 to 4/22/26]																																
109	SOUTH STORM DRAIN AND RETEN	20 days	3/2/26	3/27/26	100%	0 days	106	132	[Gantt bar from 3/2/26 to 3/27/26]																																
110	SOUTH FIRE HYDRANT	11 days	4/8/26	4/22/26	0%	7 days	106,56	132	[Gantt bar from 4/8/26 to 4/22/26]																																

Project: Project1 Date: 4/6/26	Task		Summary		Inactive Milestone		Duration-only		Start-only		External Milestone		Critical Split	
	Split		Project Summary		Inactive Summary		Manual Summary Rollup		Finish-only		Deadline		Progress	
	Milestone		Inactive Task		Manual Task		Manual Summary		External Tasks		Critical		Manual Progress	

INTERNAL HORACE MANN 4/6/26
Substantial Completion 7/28/26

ID	Task Name	Duration	Start	Finish	% Complete	Free Slack	Predecessors	Successors	2026																																
									29	5	12	19	26	2	9	16	23	2	9	16	23	30	6	13	20	27	4	11	18	25	1	8	15	22	29	6	13	20	27	3	10
111	NORTH	167 days	8/27/25	4/28/26	100%	0 days			[Gantt bar from 8/27/25 to 4/28/26]																																
112	RFI 42/PR Delay 8/27 to 9/17?	14 days	8/27/25	9/16/25	100%	0 days		114,115FS+133 days,116,117	[Gantt bar from 8/27/25 to 9/16/25]																																
113	PR 6 GREASE TRAP DELAY - ESTIM.	60 days	9/29/25	12/24/25	100%	0 days		114FF+15 days,115FS+65 days	[Gantt bar from 9/29/25 to 12/24/25]																																
114	SEWER AND KITCHEN WAIST	20 days	12/18/25	1/16/26	100%	0 days	113FF+15 days,106,57,56,112	132FS+50 days	[Gantt bar from 12/18/25 to 1/16/26]																																
115	STROM DRAIN AND RETENTION	20 days	4/1/26	4/28/26	100%	0 days	112FS+133 days,106FS+147 days,111	147	[Gantt bar from 4/1/26 to 4/28/26]																																
116	FIRE LINES AND HYDRANTS	20 days	2/17/26	3/16/26	100%	0 days	106,112	132	[Gantt bar from 2/17/26 to 3/16/26]																																
117	Power Company WO 214925985	30 days	10/16/25	11/28/25	100%	0 days		118FS+14 days	[Gantt bar from 10/16/25 to 11/28/25]																																
118	ELECTRICAL AND COMMUNICATION PADS	5 days	12/19/25	12/26/25	100%	0 days	106FS+78 days,112FS+64 days,117FS+14 days	132	[Gantt bar from 12/19/25 to 12/26/25]																																
119	POWER CO BOLLARDS - SET XFMR	20 days	2/23/26	3/20/26	100%	0 days		375	[Gantt bar from 2/23/26 to 3/20/26]																																
120	Generator Delay	154 days	9/19/25	5/1/26	48%	86 days			[Gantt bar from 9/19/25 to 5/1/26]																																
121	Estimated Submittal Approval	1 day	9/19/25	9/19/25	100%	0 days	73		[Gantt bar from 9/19/25 to 9/19/25]																																
122	Estimated CO Approval	1 day	9/19/25	9/19/25	100%	0 days	73FS+25 days	123,344	[Gantt bar from 9/19/25 to 9/19/25]																																
123	Generator Estimated Lead time	153 days	9/22/25	5/1/26	48%	19 days	122	127FF	[Gantt bar from 9/22/25 to 5/1/26]																																
124	WIRE GENERATOR	50 days	3/27/26	6/5/26	0%	0 days			[Gantt bar from 3/27/26 to 6/5/26]																																
125	Procurement Delay	19 days	5/1/26	5/29/26	0%	0 days		127FF	[Gantt bar from 5/1/26 to 5/29/26]																																
126	RFI 216 LIFE SAFETY EQUIP DOOR CC	20.13 days	3/27/26	4/24/26	0%	95 days			[Gantt bar from 3/27/26 to 4/24/26]																																
127	ATS Arrival On Site	1 day	5/29/26	5/29/26	0%	0 days	123FF,125FF	128	[Gantt bar from 5/29/26 to 5/29/26]																																
128	Wire ATS	5 days	6/1/26	6/5/26	0%	67 days	127		[Gantt bar from 6/1/26 to 6/5/26]																																
129	MODULAR BLOCK RETAINING WALL	15 days	9/9/25	9/29/25	100%	0 days	94	130	[Gantt bar from 9/9/25 to 9/29/25]																																
130	BACKFILL	10 days	9/30/25	10/14/25	100%	0 days	129	131	[Gantt bar from 9/30/25 to 10/14/25]																																
131	FENCING	10 days	5/18/26	6/1/26	0%	71 days	130		[Gantt bar from 5/18/26 to 6/1/26]																																
132	CURBS	10 days	5/4/26	5/15/26	0%	0 days	110,114FS+50 days,118,116,109	133FS-10 days	[Gantt bar from 5/4/26 to 5/15/26]																																
133	CONCRETE PAVING AND WALKS	10 days	5/4/26	5/15/26	0%	10 days	132FS-10 days	134FS-10 days	[Gantt bar from 5/4/26 to 5/15/26]																																
134	PAVING	5 days	5/18/26	5/22/26	0%	0 days	133FS-10 days	14FF	[Gantt bar from 5/18/26 to 5/22/26]																																
135	SITE WORK 2026	168 days	11/4/25	7/8/26	49%	38 days			[Gantt bar from 11/4/25 to 7/8/26]																																
136	WINTER CONDITIONS	98 days	11/4/25	3/27/26	100%	0 days			[Gantt bar from 11/4/25 to 3/27/26]																																
137	GRADING TOUCH UP FOR UTILITES	5 days	3/30/26	4/3/26	100%	0 days		138,140,141,142,143,144,145	[Gantt bar from 3/30/26 to 4/3/26]																																
138	FINAL GRADING	25 days	4/6/26	5/8/26	0%	0 days	137	147,157SS+13 days	[Gantt bar from 4/6/26 to 5/8/26]																																
139	UTILITIES	7 days	4/6/26	4/14/26	78%	12 days			[Gantt bar from 4/6/26 to 4/14/26]																																
140	WATER	5 days	4/6/26	4/10/26	100%	0 days	137	146	[Gantt bar from 4/6/26 to 4/10/26]																																
141	FIRE WATER	5 days	4/6/26	4/10/26	100%	0 days	137	146	[Gantt bar from 4/6/26 to 4/10/26]																																
142	SEWER	5 days	4/6/26	4/10/26	0%	0 days	137	146	[Gantt bar from 4/6/26 to 4/10/26]																																
143	ELECTRICAL	5 days	4/6/26	4/10/26	100%	0 days	59,137	146	[Gantt bar from 4/6/26 to 4/10/26]																																
144	COMMUNICATION	5 days	4/6/26	4/10/26	100%	0 days	60,137	146	[Gantt bar from 4/6/26 to 4/10/26]																																
145	DRAINAGE AND RETENTION	5 days	4/6/26	4/10/26	100%	0 days	137	146	[Gantt bar from 4/6/26 to 4/10/26]																																
146	INSPECTIONS	2 days	4/13/26	4/14/26	0%	12 days	141,140,145,144,143,142	147	[Gantt bar from 4/13/26 to 4/14/26]																																
147	CONCRETE	26 days	5/1/26	6/8/26	0%	0 days	146,138,115	153SS-2 days,155,154	[Gantt bar from 5/1/26 to 6/8/26]																																

Project: Project1 Date: 4/6/26	Task	[Blue bar]	Summary	[Grey bar]	Inactive Milestone	[Grey diamond]	Duration-only	[Light blue bar]	Start-only	[Blue bar]	External Milestone	[Grey diamond]	Critical Split	[Red dotted bar]
	Split	[Dotted bar]	Project Summary	[Grey bar]	Inactive Summary	[Grey bar]	Manual Summary Rollup	[Light blue bar]	Finish-only	[Blue bar]	Deadline	[Green diamond]	Progress	[Blue bar]
	Milestone	[Grey diamond]	Inactive Task	[Grey bar]	Manual Task	[Light blue bar]	Manual Summary	[Light blue bar]	External Tasks	[Blue bar]	Critical	[Red bar]	Manual Progress	[Red bar]

INTERNAL HORACE MANN 4/6/26
Substantial Completion 7/28/26

ID	Task Name	Duration	Start	Finish	% Complete	Free Slack	Predecessors	Successors	2026																																
									29	5	12	19	26	2	9	16	23	2	9	16	23	30	6	13	20	27	4	11	18	25	1	8	15	22	29	6	13	20	27	3	10
148	SIDEWALKS AND PATIOS	20 days	5/1/26	6/1/26	0%	0 days		152,151	[Gantt bar: May 1 - May 21]																																
149	BASKETBALL CURB	10 days	5/1/26	5/15/26	0%	10 days		152,151	[Gantt bar: May 1 - May 11]																																
150	CURBS	10 days	5/1/26	5/15/26	0%	10 days		152,151	[Gantt bar: May 1 - May 11]																																
151	PLAYGROUND CURB	5 days	6/2/26	6/8/26	0%	43 days	148,149,150		[Gantt bar: June 2 - June 7]																																
152	BASKETBALL FENCE	20 days	6/2/26	6/30/26	0%	51 days	149,150,148		[Gantt bar: June 2 - June 22]																																
153	PLAYGROUND EQUIPMENT	15 days	6/1/26	6/22/26	0%	6 days	147SS-2 days	438,154	[Gantt bar: June 1 - June 16]																																
154	PLAYGROUND SURFACE	5 days	7/1/26	7/8/26	0%	46 days	153,147		[Gantt bar: July 1 - July 8]																																
155	BASKETBALL COURT EQUIPMENT & STF	15 days	6/9/26	6/30/26	0%	11 days	147	438	[Gantt bar: June 9 - June 24]																																
156	PAVING	25 days?	5/18/26	6/23/26	0%	0 days?			[Gantt bar: May 18 - June 13]																																
157	BINDER	5 days	5/18/26	5/22/26	0%	16 days	138SS+13 days	159	[Gantt bar: May 18 - May 23]																																
158	TOP COAT	3 days	6/18/26	6/23/26	0%	56 days	159		[Gantt bar: June 18 - June 21]																																
159	GRANITE CURB	1 day?	6/17/26	6/17/26	0%	0 days?	157	160,158	[Gantt bar: June 17]																																
160	STRIPING AND SIGNAGE	1 day	6/18/26	6/18/26	0%	18 days	159	438	[Gantt bar: June 18]																																
161	EXISTING BUILDING RENOVATION ALL FL	111 days	8/29/25	2/10/26	86%	148 days			[Gantt bar: August 29, 2025 - February 10, 2026]																																
162	PCO 14; RFI 42 and PR 3 Delay - Ongoing as of 9/10 est complete 9/25	77 days	8/29/25	12/19/25	100%	0 days		163,164,259	[Gantt bar: August 29, 2025 - December 19, 2025]																																
163	PR 8, PR 9, PR 10, SKA20 Delay	32 days	12/22/25	2/6/26	50%	150 days	162	164,166,173,174	[Gantt bar: December 22, 2025 - February 6, 2026]																																
164	MAKE SAFE	2 days	2/9/26	2/10/26	100%	0 days	163,99,54,162	165	[Gantt bar: February 9, 2026]																																
165	ABATEMENT	1 day	11/12/25	11/12/25	100%	0 days	164	168,169	[Gantt bar: November 12, 2025]																																
166	UPDATED DRAWING -FUTURE PCO STEELWORK @LINTEL/COLUMN	1 day	2/9/26	2/9/26	100%	0 days	163	173,174	[Gantt bar: February 9, 2026]																																
167	EXISTING BLDG SECOND FLOOR	151 days	11/13/25	6/22/26	40%	57 days			[Gantt bar: November 13, 2025 - June 22, 2026]																																
168	INSTALL TEMP POWER AND LIGHTING	5 days	11/13/25	11/19/25	100%	0 days	165	208	[Gantt bar: November 13, 2025 - November 19, 2025]																																
169	SELECTIVE DEMO	9 days	11/13/25	11/25/25	100%	0 days	101,165,99	170,209	[Gantt bar: November 13, 2025 - November 25, 2025]																																
170	DEMO	1 day	11/26/25	11/26/25	100%	0 days	99,169	171,173,174	[Gantt bar: November 26, 2025]																																
171	STRUCTURAL STEEL	15 days	11/28/25	12/18/25	100%	0 days	170		[Gantt bar: November 28, 2025 - December 18, 2025]																																
172	TRADE WORK PRIOR TO FRAMING	5 days	2/10/26	2/17/26	100%	0 days	68		[Gantt bar: February 10, 2026 - February 17, 2026]																																
173	HVAC LARGE DUCT	5 days	2/10/26	2/17/26	100%	0 days	166,163,58,170	175FS-28 days	[Gantt bar: February 10, 2026 - February 17, 2026]																																
174	FIRE SPINKLER MAIN LINES	5 days	2/10/26	2/17/26	100%	0 days	166,163,56,170	175FS-28 days	[Gantt bar: February 10, 2026 - February 17, 2026]																																
175	INTERIOR METAL FRAMING	10 days	1/7/26	1/21/26	100%	0 days	174FS-28 days,173FS-28 days	178SS,179SS,180SS,181SS	[Gantt bar: January 7, 2026 - January 21, 2026]																																
176	MASONRY 2025	20 days	1/9/26	2/6/26	100%	0 days			[Gantt bar: January 9, 2026 - February 6, 2026]																																
177	ROUGH TRADES	30 days	12/9/25	1/22/26	91%	161 days			[Gantt bar: December 9, 2025 - January 22, 2026]																																
178	HVAC	1 day	1/7/26	1/7/26	100%	0 days	175SS	183FS+5 days	[Gantt bar: January 7, 2026]																																
179	FIRE SPRINKLERS	1 day	1/7/26	1/7/26	100%	0 days	175SS	183FS+5 days	[Gantt bar: January 7, 2026]																																
180	PLUMBING	1 day	1/7/26	1/7/26	100%	0 days	175SS	183FS+5 days	[Gantt bar: January 7, 2026]																																
181	ELECTRICAL	1 day	1/7/26	1/7/26	10%	171 days	175SS	182FS-20 days,183	[Gantt bar: January 7, 2026]																																
182	FIRE STOPPING	1 day	12/9/25	12/9/25	100%	0 days	181FS-20 days	183FS+15 days	[Gantt bar: December 9, 2025]																																
183	INSPECTIONS	5 days	1/15/26	1/22/26	100%	0 days	182FS+15 days,181,180FS+5 days,17184,375FF		[Gantt bar: January 15, 2026 - January 22, 2026]																																

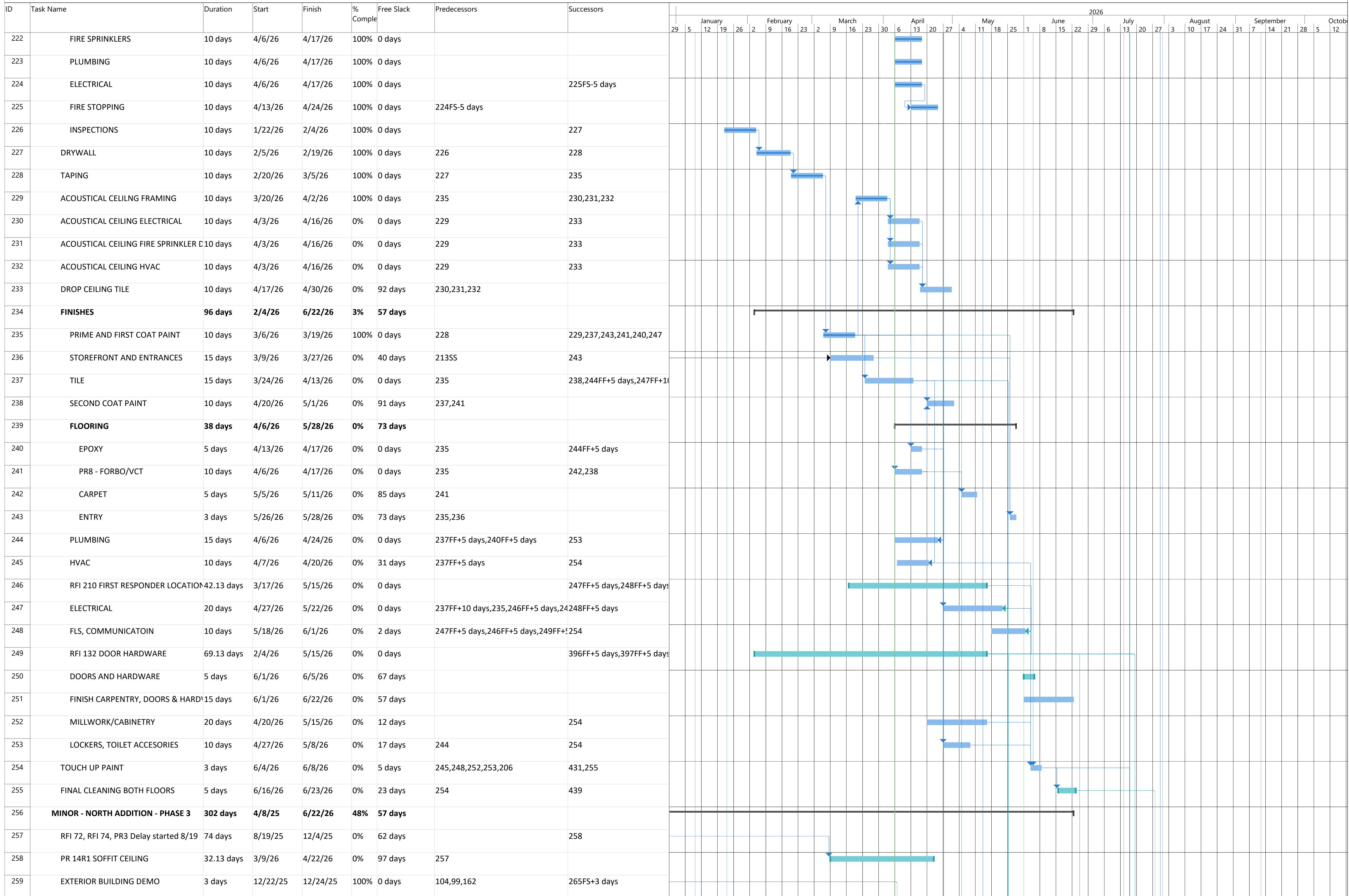
Project: Project1 Date: 4/6/26	Task	Summary	Inactive Milestone	Duration-only	Start-only	External Milestone	Critical Split
	Split	Project Summary	Inactive Summary	Manual Summary Rollup	Finish-only	Deadline	Progress
	Milestone	Inactive Task	Manual Task	Manual Summary	External Tasks	Critical	Manual Progress

INTERNAL HORACE MANN 4/6/26
Substantial Completion 7/28/26

ID	Task Name	Duration	Start	Finish	% Comple	Free Slack	Predecessors	Successors	2026																																																	
									January					February					March					April					May					June					July					August					September					October				
									29	5	12	19	26	2	9	16	23	2	9	16	23	30	6	13	20	27	4	11	18	25	1	8	15	22	29	6	13	20	27	3	10	17	24	31	7	14	21	28	5	12								
184	DRYWALL	3 days	1/23/26	1/27/26	100%	0 days	70,183	192,185																																																		
185	TAPING	10 days	1/28/26	2/10/26	100%	0 days	184	192																																																		
186	ACOUSTICAL CELILNG FRAMING	10 days	2/26/26	3/11/26	100%	0 days	192	187,188,189																																																		
187	ACOUSTICAL CEILING ELECTRICAL	10 days	4/1/26	4/14/26	0%	0 days	186	190																																																		
188	ACOUSTICAL CEILING FIRE SPRINKLER	10 days	4/1/26	4/14/26	0%	0 days	186	190																																																		
189	ACOUSTICAL CEILING HVAC	10 days	4/1/26	4/14/26	0%	0 days	186	190																																																		
190	DROP CEILING TILE	10 days	4/15/26	4/28/26	0%	0 days	189,187,188	195																																																		
191	FINISHES	91 days	2/11/26	6/22/26	0%	57 days																																																				
192	PRIME AND FIRST COAT PAINT	10 days	2/11/26	2/25/26	0%	44 days	184,185	195,203,186																																																		
193	STOREFRONT AND ENTRANCES	15 days	5/11/26	6/1/26	0%	71 days																																																				
194	TILE	5 days	4/13/26	4/17/26	0%	0 days		195,201FF+10 days,197																																																		
195	SECOND COAT PAINT	10 days	4/29/26	5/12/26	0%	0 days	194,192,190	201,200,204SS																																																		
196	FLOORING	15 days	4/6/26	4/24/26	0%	76 days																																																				
197	EPOXY	5 days	4/20/26	4/24/26	0%	0 days	194	199,206																																																		
198	VCT, RUBBER, LINOLEUM, RUBBER	10 days	4/6/26	4/17/26	0%	27 days		206																																																		
199	PLUMBING	5 days	4/27/26	5/1/26	0%	0 days	197	205																																																		
200	HVAC	5 days	5/13/26	5/19/26	0%	5 days	195	206																																																		
201	ELECTRICAL	5 days	5/13/26	5/19/26	0%	0 days	195,194FF+10 days	202FF+5 days																																																		
202	FLS, COMMUNICATOIN	5 days	5/20/26	5/27/26	0%	0 days	201FF+5 days	206																																																		
203	FINISH CARPENTRY, DOOR & HARDW	15 days	6/1/26	6/22/26	0%	57 days	192																																																			
204	MILLWORK/CABINETRY	5 days	4/29/26	5/5/26	0%	15 days	195SS	206																																																		
205	LOCKERS, TOILET ACCESORIES	10 days	5/4/26	5/15/26	0%	7 days	199	206																																																		
206	TOUCH UP PAINT	5 days	5/28/26	6/3/26	0%	0 days	200,202,204,205,197,198	254																																																		
207	EXISTING BLDG FIRST FLOOR	203 days	8/29/25	6/23/26	31%	56 days																																																				
208	INSTALL TEMP POWER AND LIGHTING	5 days	11/20/25	11/26/25	100%	0 days	168	209																																																		
209	SELECTIVE DEMO	5 days	11/28/25	12/4/25	100%	0 days	208,169	211FS-5 days																																																		
210	RFI 74 Delay 8-26 to 9-5	5 days	8/29/25	9/5/25	100%	0 days		211																																																		
211	DEMO	5 days	2/9/26	2/13/26	100%	0 days	209FS-5 days,210	212																																																		
212	STRUCTURAL STEEL	1 day	2/17/26	2/17/26	100%	0 days	211	214,215,216																																																		
213	TRADE WORK PRIOR TO FRAMING	48 days	12/22/25	3/3/26	100%	0 days		236SS																																																		
214	HVAC LARGE DUCT	5 days	12/22/25	12/29/25	100%	0 days	212	216																																																		
215	FIRE SPINKLER MAIN LINES	5 days	12/22/25	12/29/25	100%	0 days	212	216																																																		
216	INTERIOR METAL FRAMING	10 days	2/18/26	3/3/26	100%	0 days	212,214,215	217																																																		
217	SHEETING	1 day	3/4/26	3/4/26	100%	0 days	216	218FS+2 days																																																		
218	WALL MEMBRANE	1 day	3/9/26	3/9/26	100%	0 days	217FS+2 days	219																																																		
219	MASONRY 2025	1 day	3/10/26	3/10/26	100%	0 days	218																																																			
220	ROUGH TRADES	66 days	1/22/26	4/24/26	100%	0 days																																																				
221	HVAC	10 days	4/6/26	4/17/26	100%	0 days																																																				

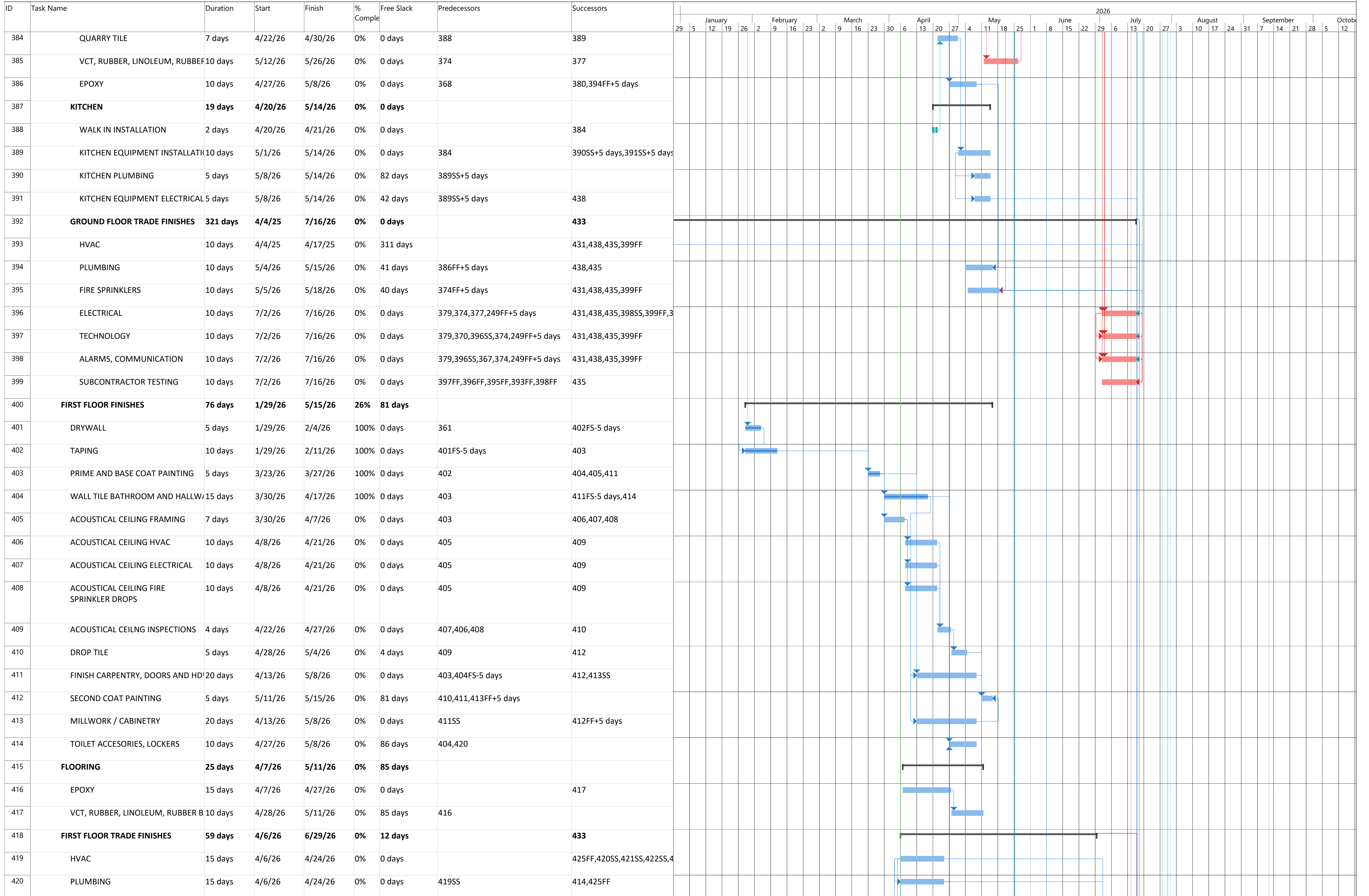
Project: Project1 Date: 4/6/26	<table border="0"> <tr> <td></td><td>Task</td> <td></td><td>Summary</td> <td></td><td>Inactive Milestone</td> <td></td><td>Duration-only</td> <td></td><td>Start-only</td> <td></td><td>External Milestone</td> <td></td><td>Critical Split</td> </tr> <tr> <td></td><td>Split</td> <td></td><td>Project Summary</td> <td></td><td>Inactive Summary</td> <td></td><td>Manual Summary Rollup</td> <td></td><td>Finish-only</td> <td></td><td>Deadline</td> <td></td><td>Progress</td> </tr> <tr> <td></td><td>Milestone</td> <td></td><td>Inactive Task</td> <td></td><td>Manual Task</td> <td></td><td>Manual Summary</td> <td></td><td>External Tasks</td> <td></td><td>Critical</td> <td></td><td>Manual Progress</td> </tr> </table>		Task		Summary		Inactive Milestone		Duration-only		Start-only		External Milestone		Critical Split		Split		Project Summary		Inactive Summary		Manual Summary Rollup		Finish-only		Deadline		Progress		Milestone		Inactive Task		Manual Task		Manual Summary		External Tasks		Critical		Manual Progress
	Task		Summary		Inactive Milestone		Duration-only		Start-only		External Milestone		Critical Split																														
	Split		Project Summary		Inactive Summary		Manual Summary Rollup		Finish-only		Deadline		Progress																														
	Milestone		Inactive Task		Manual Task		Manual Summary		External Tasks		Critical		Manual Progress																														

INTERNAL HORACE MANN 4/6/26
Substantial Completion 7/28/26



Project: Project1 Date: 4/6/26	Task		Summary		Inactive Milestone		Duration-only		Start-only		External Milestone		Critical Split
	Split		Project Summary		Inactive Summary		Manual Summary Rollup		Finish-only		Deadline		Progress
	Milestone		Inactive Task		Manual Task		Manual Summary		External Tasks		Critical		Manual Progress

INTERNAL HORACE MANN 4/6/26
Substantial Completion 7/28/26



Project: Project1
Date: 4/6/26

	Task		Summary		Inactive Milestone		Duration-only		Start-only		External Milestone		Critical Split
	Split		Project Summary		Inactive Summary		Manual Summary Rollup		Finish-only		Deadline		Progress
	Milestone		Inactive Task		Manual Task		Manual Summary		External Tasks		Critical		Manual Progress

INTERNAL HORACE MANN 4/6/26
Substantial Completion 7/28/26

ID	Task Name	Duration	Start	Finish	% Complete	Free Slack	Predecessors	Successors	2026																																
									29	5	12	19	26	2	9	16	23	2	9	16	23	30	6	13	20	27	4	11	18	25	1	8	15	22	29	6	13	20	27	3	10
421	FIRE SPRINKLERS	15 days	4/6/26	4/24/26	0%	44 days	419SS	425FF	[Gantt bar: April 6 - April 21]																																
422	ELECTRICAL	15 days	5/4/26	5/22/26	0%	24 days	419SS,249FF+5 days	425FF	[Gantt bar: May 4 - May 19]																																
423	TECHNOLOGY	15 days	5/4/26	5/22/26	0%	24 days	419SS,249FF+5 days	425FF	[Gantt bar: May 4 - May 19]																																
424	ALARMS, COMMUNICATION	15 days	5/4/26	5/22/26	0%	24 days	419SS,249FF+5 days	425FF	[Gantt bar: May 4 - May 19]																																
425	SUBCONTRACTOR TESTING	15 days	6/8/26	6/29/26	0%	12 days	419FF,420FF,421FF,422FF,424FF,425	435	[Gantt bar: June 8 - June 23]																																
426	*INSPECTIONS FOR UTILITY RELEASE	5 days	4/13/26	4/17/26	0%	0 days		427SS+5 days	[Gantt bar: April 13 - April 17]																																
427	PERMANENT POWER	5 days	4/20/26	4/24/26	0%	0 days	426SS+5 days	15FF,428,429	[Gantt bar: April 20 - April 24]																																
428	EQUIPMENT START UP AND TEST	10 days	4/27/26	5/8/26	0%	86 days	427		[Gantt bar: April 27 - May 7]																																
429	VRC LIFT	10 days	5/4/26	5/18/26	0%	40 days	427	438	[Gantt bar: May 4 - May 14]																																
430	FIXTURIZATION, KITCHEN EQUIP	30 days	4/20/26	6/1/26	0%	71 days			[Gantt bar: April 20 - May 20]																																
431	TOUCH UP PAINTING	5 days	7/17/26	7/23/26	0%	2 days	398,397,393,395,396,254	439,432SS+2 days	[Gantt bar: July 17 - July 22]																																
432	FINAL CLEANING	5 days	8/12/26	8/18/26	0%	17 days	431SS+2 days		[Gantt bar: August 12 - August 17]																																
433	PUNCHLIST	20 days	7/17/26	8/13/26	0%	0 days	418,392	440	[Gantt bar: July 17 - August 6]																																
434	COMMISSIONING	20 days	7/17/26	8/13/26	0%	0 days			[Gantt bar: July 17 - August 6]																																
435	COMMISSIONING START AND TEST	15 days	7/17/26	8/6/26	0%	0 days	425,399,398,397,396,395,394,393	17SS,436SS,437FS-5 days	[Gantt bar: July 17 - July 31]																																
436	FINAL ADJUSTMENTS	10 days	7/17/26	7/30/26	0%	10 days	435SS	440	[Gantt bar: July 17 - July 26]																																
437	TRAINING	10 days	7/31/26	8/13/26	0%	0 days	435FS-5 days	440	[Gantt bar: July 31 - August 10]																																
438	FINAL INSPECTIONS	7 days	7/17/26	7/27/26	0%	0 days	160,398,397,396,395,394,393,155,116FF,439		[Gantt bar: July 17 - July 24]																																
439	SUBSTANTIAL COMPLETION	1 day	7/28/26	7/28/26	0%	0 days	431,438,255	20FF	[Gantt bar: July 28]																																
440	CLOSEOUT DOCUMENTS	20 days	8/14/26	9/11/26	0%	0 days	433,436,437		[Gantt bar: August 14 - September 3]																																
441	HM TECHNOLOGY SCHEDULE	175 days?	12/18/25	9/2/26	9%	0 days?			[Gantt bar: December 18, 2025 - September 2, 2026]																																
442	NETWORK PROCUREMENT	1 day	12/18/25	12/18/25	100%	0 days			[Gantt bar: December 18, 2025]																																
443	OWNER TECH PORCUREMENT & IT DEVICE PROCUREMENT		1/5/26		0%	170 days?			[Gantt bar: January 5, 2026]																																
444	OWNER TECH INSTALL		6/29/26		0%	52 days			[Gantt bar: June 29, 2026]																																
445	NPS/VENDOR INSTALL		7/13/26		0%	43 days?			[Gantt bar: July 13, 2026]																																
446	NETWORK INSTALL		7/13/26		0%	43 days?			[Gantt bar: July 13, 2026]																																
447	SUBSTANTIAL COMPLETION		7/31/26		0%	29 days?			[Gantt bar: July 31, 2026]																																
448	FF&E INSTALL		8/3/26		0%	28 days?			[Gantt bar: August 3, 2026]																																
449	IT DEVICE INSTALL		8/3/26		0%	28 days?			[Gantt bar: August 3, 2026]																																
450	SCHOOL OPENS		9/2/26		0%	6 days?			[Gantt bar: September 2, 2026]																																
451		1 day?	12/18/25	12/18/25	0%	180 days?			[Gantt bar: December 18, 2025]																																
452		1 day?	12/18/25	12/18/25	0%	180 days?			[Gantt bar: December 18, 2025]																																

Project: Project1
 Date: 4/6/26

Task		Summary		Inactive Milestone		Duration-only		Start-only		External Milestone		Critical Split	
Split		Project Summary		Inactive Summary		Manual Summary Rollup		Finish-only		Deadline		Progress	
Milestone		Inactive Task		Manual Task		Manual Summary		External Tasks		Critical		Manual Progress	