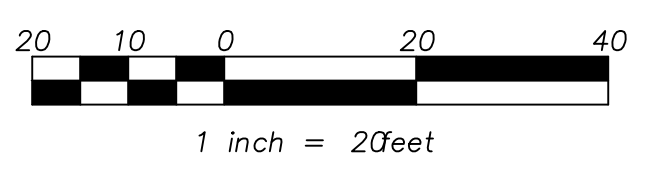
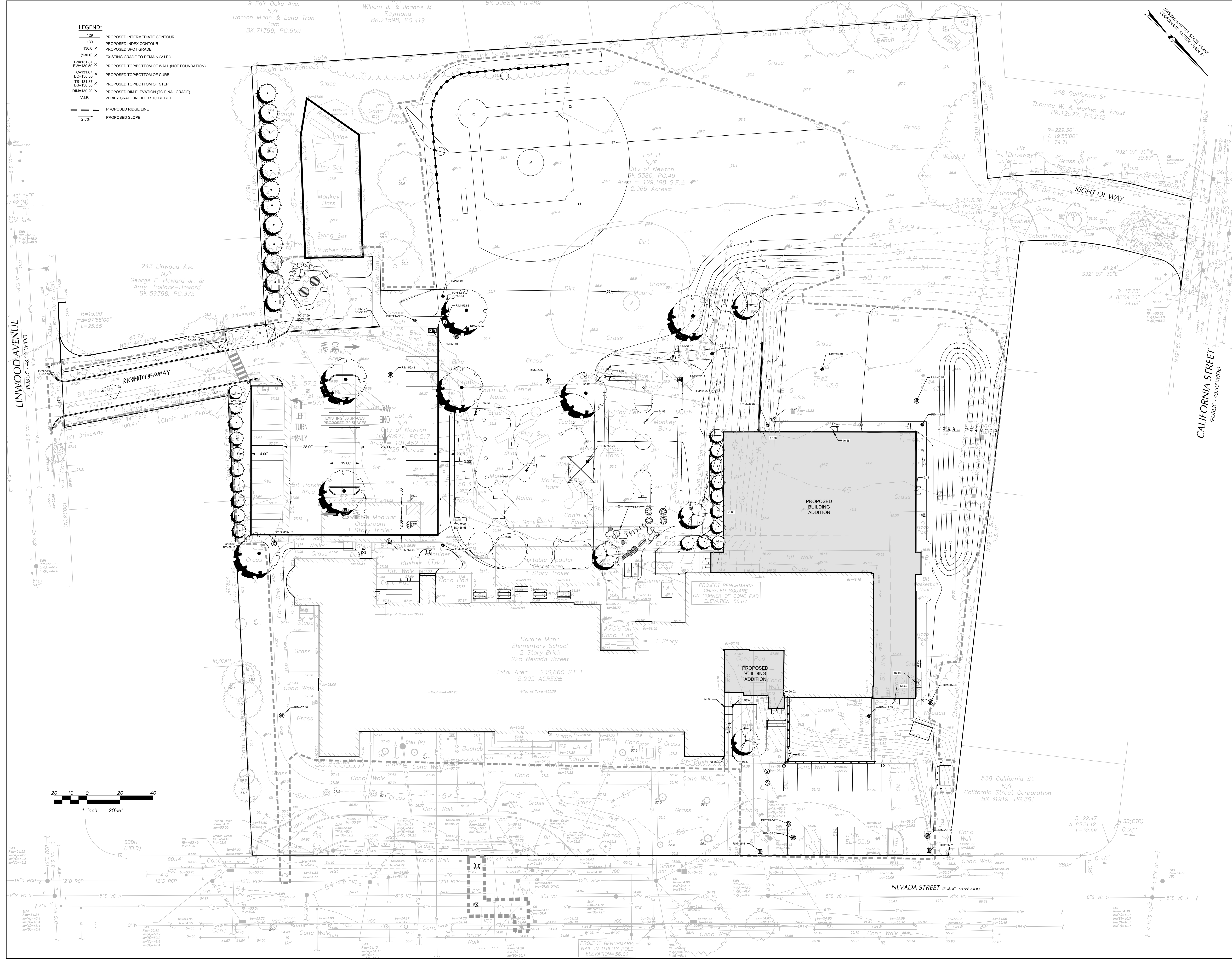


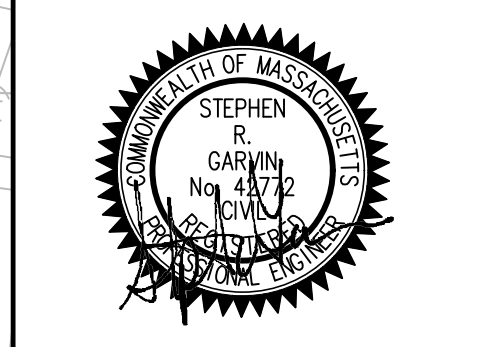
- LEGEND:**
- 129 PROPOSED INTERMEDIATE CONTOUR
 - 130 PROPOSED INDEX CONTOUR
 - 130.0 X PROPOSED SPOT GRADE
 - (130.0) X EXISTING GRADE TO REMAIN (V.I.F.)
 - TW=131.87 PROPOSED TOP/BOTTOM OF WALL (NOT FOUNDATION)
 - BW=130.56 PROPOSED TOP/BOTTOM OF CURB
 - TS=111.81 PROPOSED TOP/BOTTOM OF STEP
 - BS=130.50 PROPOSED RIM ELEVATION (TO FINAL GRADE)
 - RM=130.20 X V.I.F. VERIFY GRADE IN FIELD TO BE SET
 - PROPOSED RIDGE LINE
 - 2.6% PROPOSED SLOPE



RDA

Raymond Design Associates, Inc.
Architects & Planners
60 Ledgewood Place
Rockland, MA 02370

samioles
Samioles Consultants Inc.
Civil Engineers & Land Surveyors
30 A Street
Frammingham, MA 01701
T 508.877.6688
F 508.877.8349
www.samioles.com



Horace Mann Elementary School
225 Nevada Street, Newton Massachusetts
CIVIL GRADING PLAN

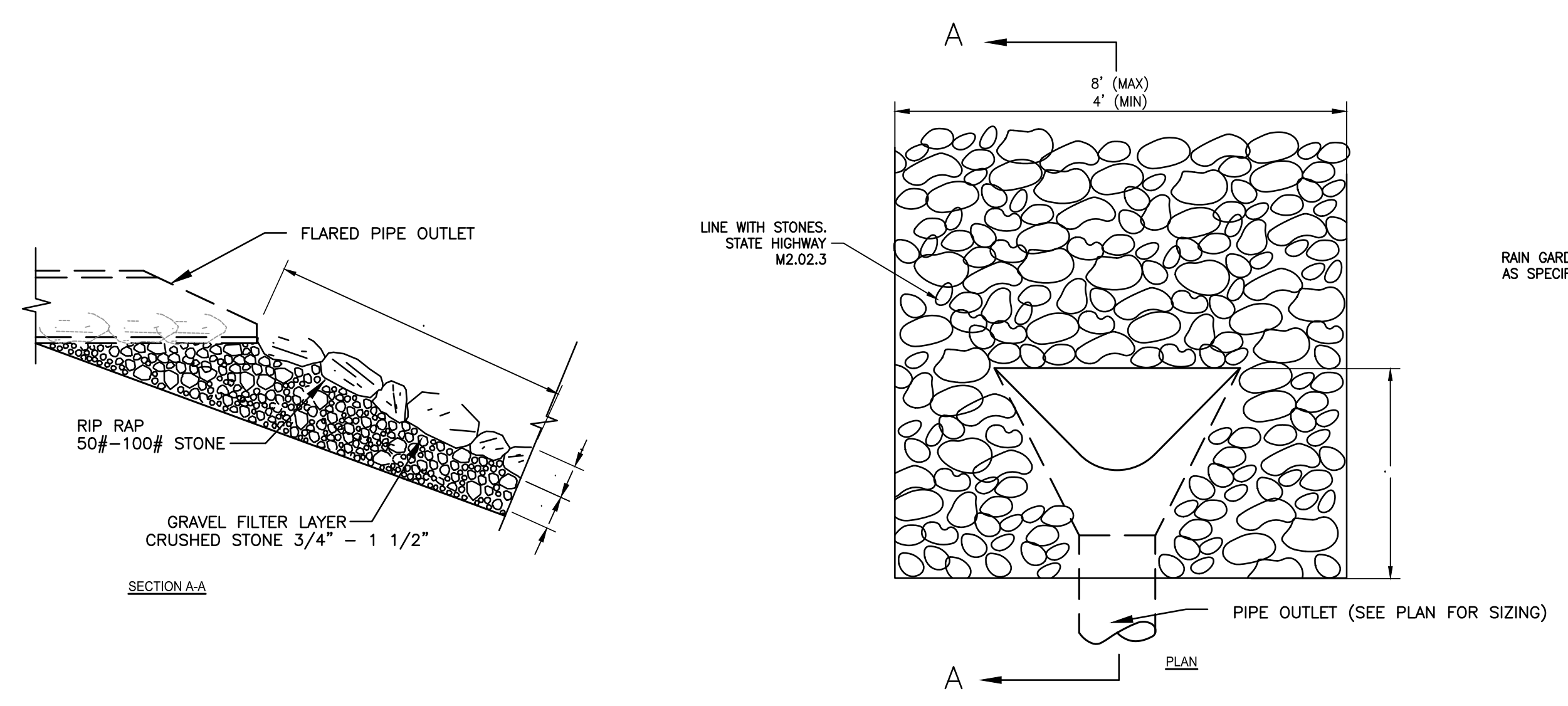
Revisions:

No.	Date	Description

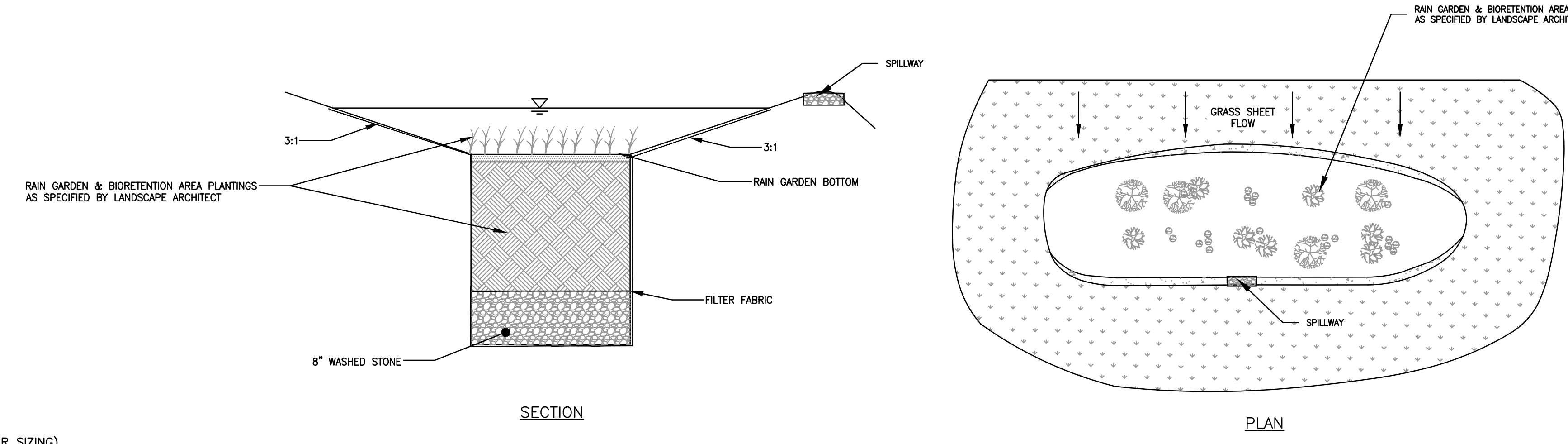
Drawing Scale: 1" = 20'
Project No.: 52034.00
Date: 03/25/2024
FOR SITE PLAN APPROVAL

C-3.0

NOTE: ALL WORK SHALL COMPLY WITH THE CITY OF NEWTON STANDARD SPECIFICATIONS AND GENERAL CONSTRUCTION DETAILS.



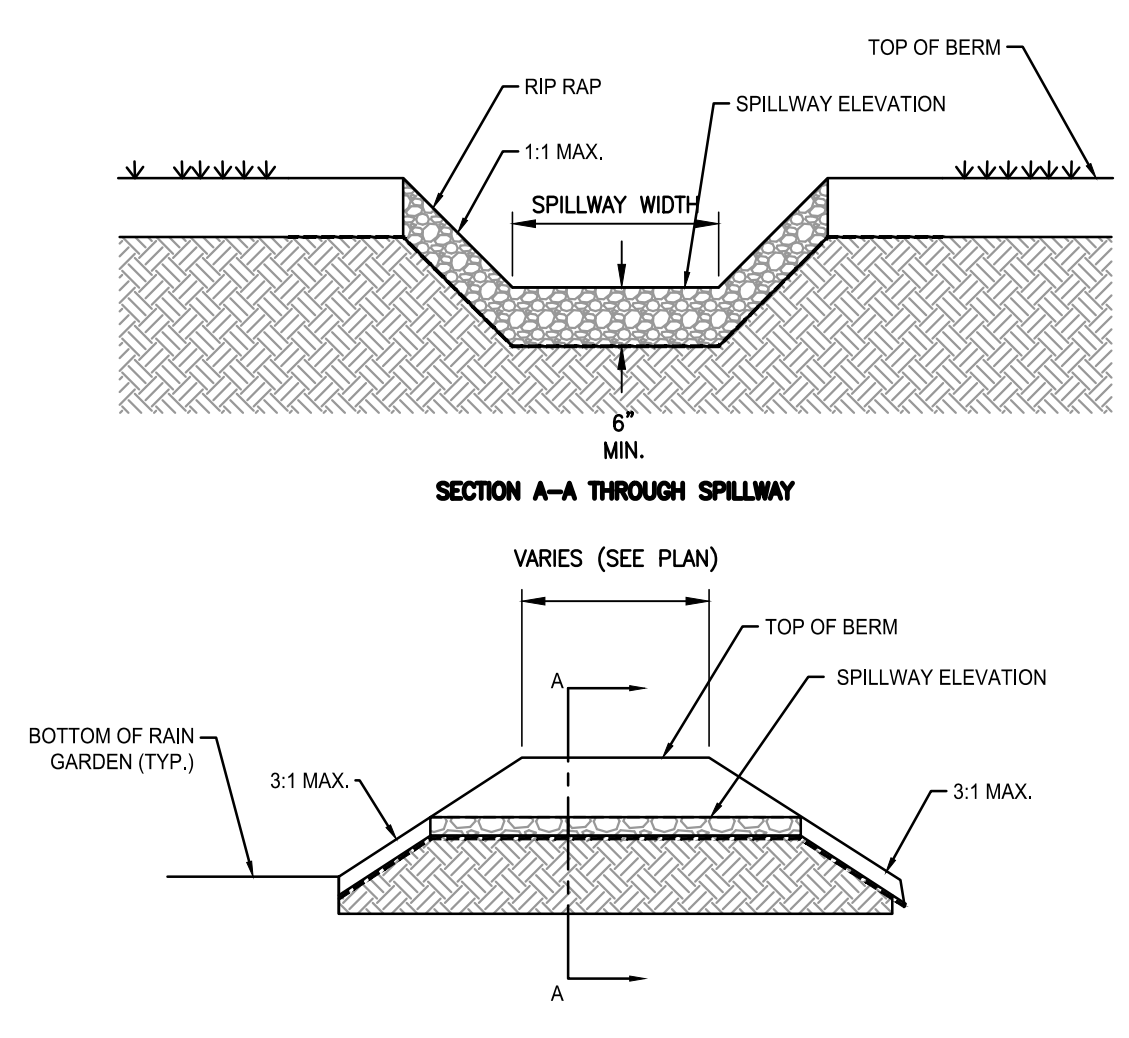
1 FLARED END SECTION AND RIP RAP DETAIL
NTS



NOTES

1. PLANTING MEDIUM SHALL NOT BE EXPOSED TO SEDIMENT LADEN WATER DURING CONSTRUCTION. UPSTREAM RUNOFF SHOULD BE STABILIZED (E.G. STRAW WATTLES OR OTHER BARRIERS) PRIOR TO REACHING RAINGARDEN. IF POSSIBLE INSTALLATION OF THE FILTER MEDIA SHOULD NOT OCCUR UNTIL THE MAJORITY OF UPSTREAM AREAS ARE STABILIZED.
2. THE PLANTING MEDIUM SHALL BE INSPECTED AFTER EVERY MAJOR STORM IN THE FIRST FEW MONTHS TO ENSURE PROPER FUNCTION.
3. THE TOP SEVERAL INCHES OF THE FILTER SHALL BE REPLACED WITH FRESH MATERIAL WHEN WATER PONDS ON THE SURFACE FOR MORE THAN 72 HOURS. THE REMOVED SEDIMENTS SHOULD BE DISPOSED OF IN AN ACCEPTABLE MANNER.
4. COMPACTION OF THE SOIL BED MATERIAL AND UNDISTURBED EARTH BASE SHALL BE AVOIDED. IF COMPACTION OCCURS, ROTOTILL PRIOR TO SEEDING OR SODDING.
5. IF RELEVANT, PLACE COMMON BORROW MATERIAL IN 12\"/>

2 BIORETENTION/ RAIN GARDEN -SECTION
NTS



3 EMERGENCY SPILLWAY
NTS

RDA

Raymond Design Associates, Inc.
Architects & Planners
60 Ledgewood Place
Rockland, MA 02370

samioles
Samioles Consultants Inc.
Civil Engineers + Land Surveyors
20 A Street
Frammingham, MA 01701
T 508.877.6688
F 508.877.8349
www.samioles.com



Horace Mann Elementary School
225 Nevada Street, Newton Massachusetts

CIVIL DETAILS

Revisions:

No.	Date	Description

Drawing Scale: NTS
Project No.: 52034.00
Date: 03/25/2024
FOR SITE PLAN APPROVAL

C-6.4